

How to Connect your BYOD Device to the Chatswood High School Wi-Fi network

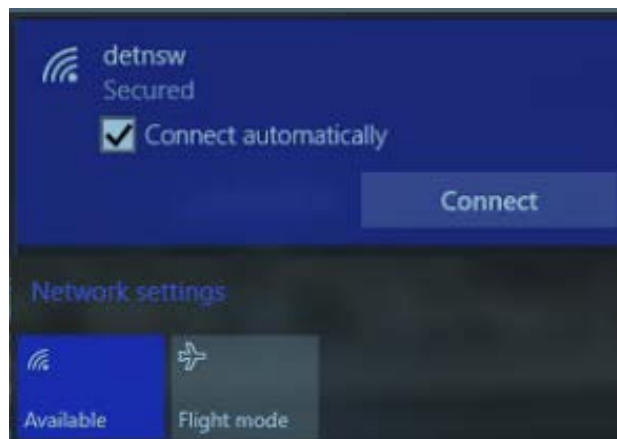
Our School's wireless network only supports 5GHz wireless devices. Devices that do not fit our Standard Specifications may not connect.

Below are the instructions to connect devices to the school Wi-Fi. The instructions include:

- Windows 10 laptops + tablets.
- Apple MacBook Laptops.

Windows 10

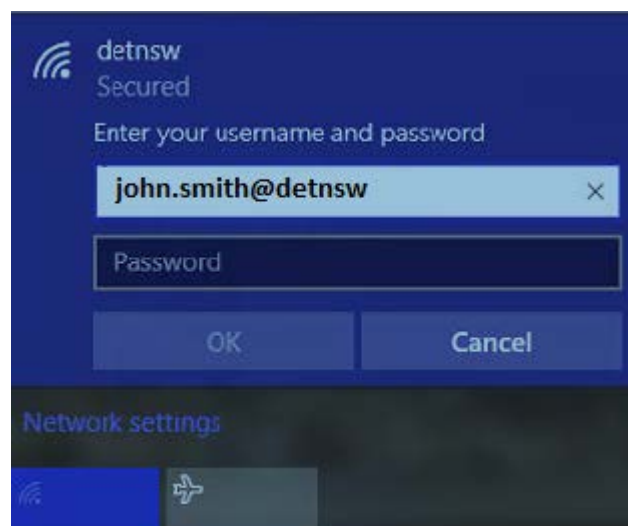
1. Click the Wi-Fi tab in the bottom right hand corner.



2. Select the "detnsw" network and click connect.

3. Enter your DEC Portal account details, adding @detnsw to the end of your username.

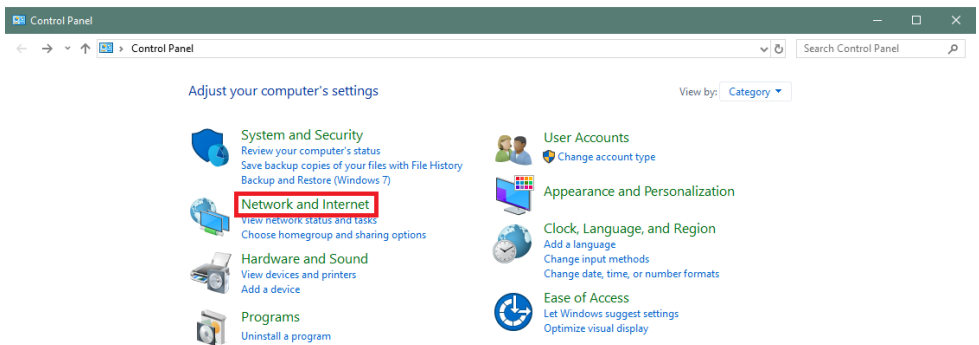
e.g., john.smith123@detnsw



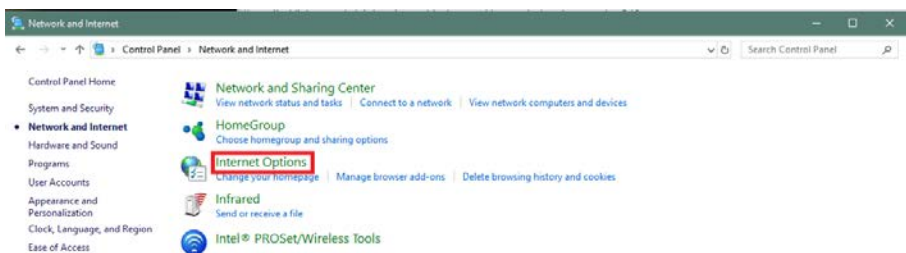
To ensure there is no conflict with the DEC Proxy please follow the following steps.

1. Search Control Panel in the start menu, and open.

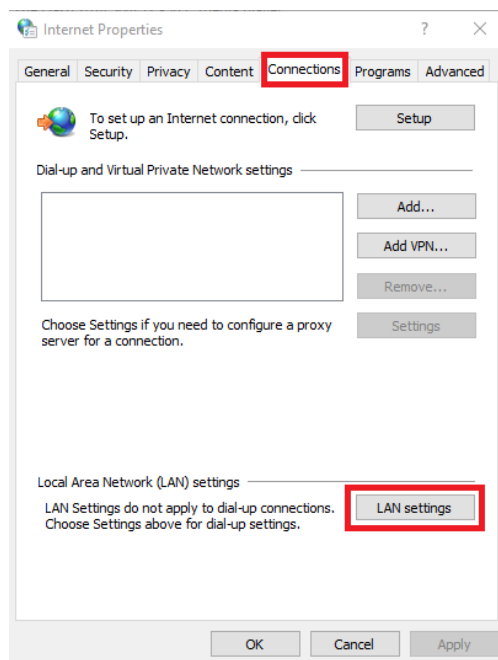
2. Click Network and Internet.



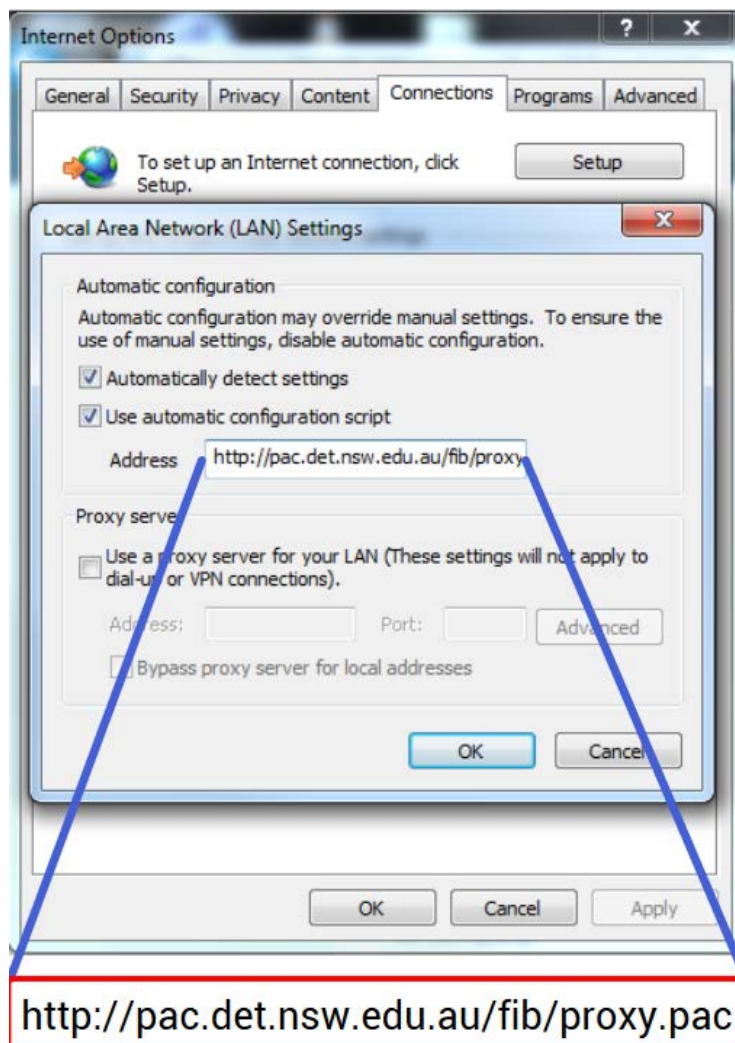
3. Click internet options.



4. Click the Connections tab, and then select the 'LAN Settings' box.



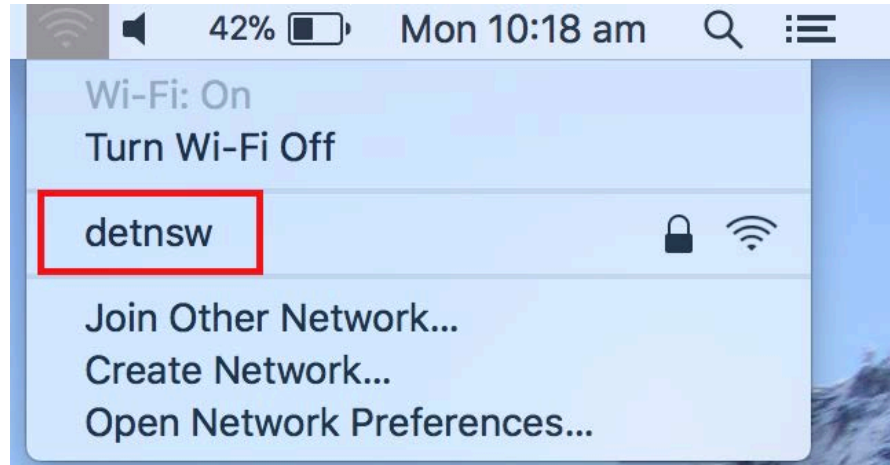
5. Tick the Highlighted box and enter the DEC Proxy details to ensure internet connectivity.



Apple MacBook

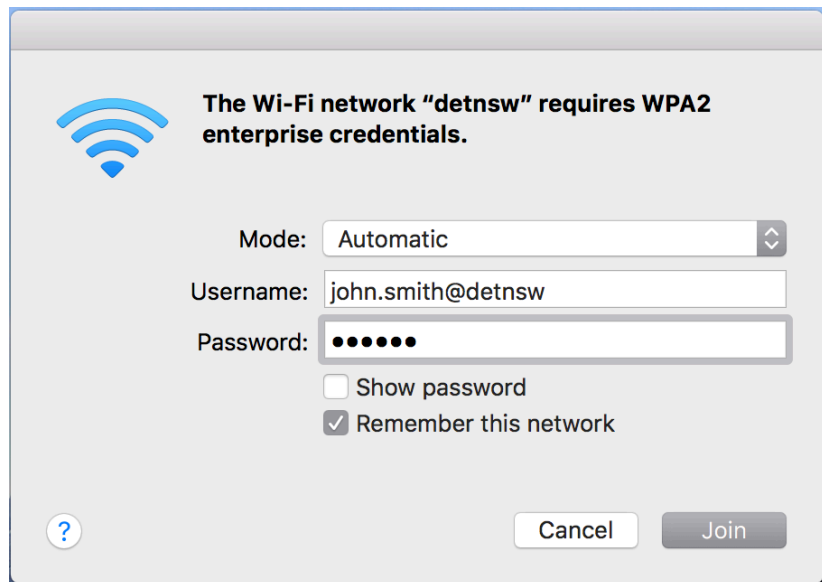
1. Click the Wi-Fi icon in the top right corner of the screen.

2. Select the 'detnsw' network.



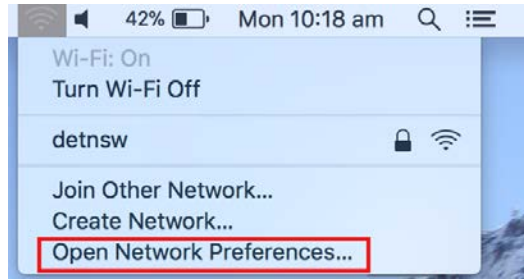
3. Enter your DEC Portal account details, adding @detnsw to the end of your username.

e.g., john.smith123@detnsw

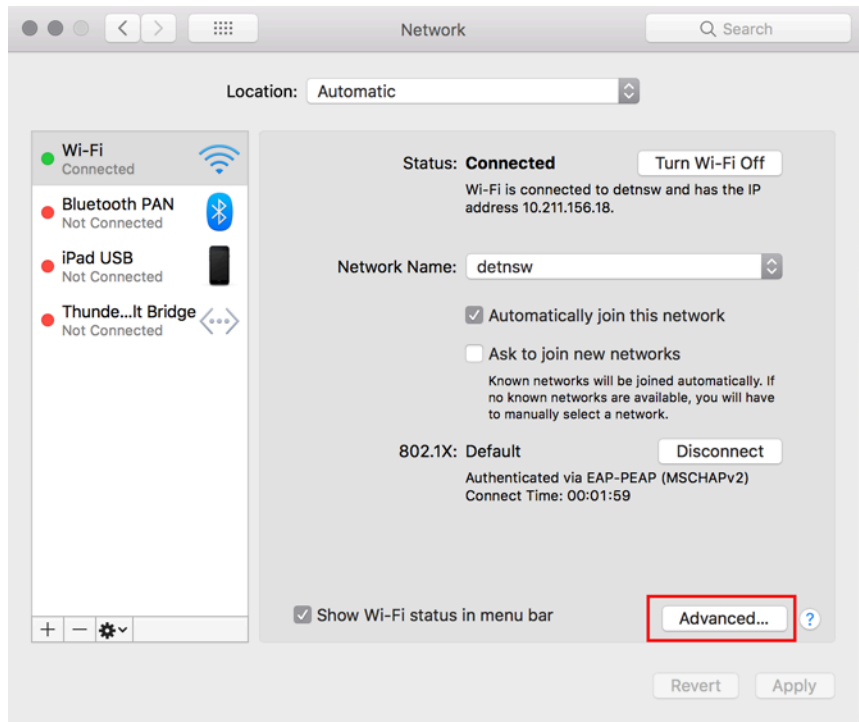


To ensure there is no conflict with the DEC Proxy please follow the following steps:

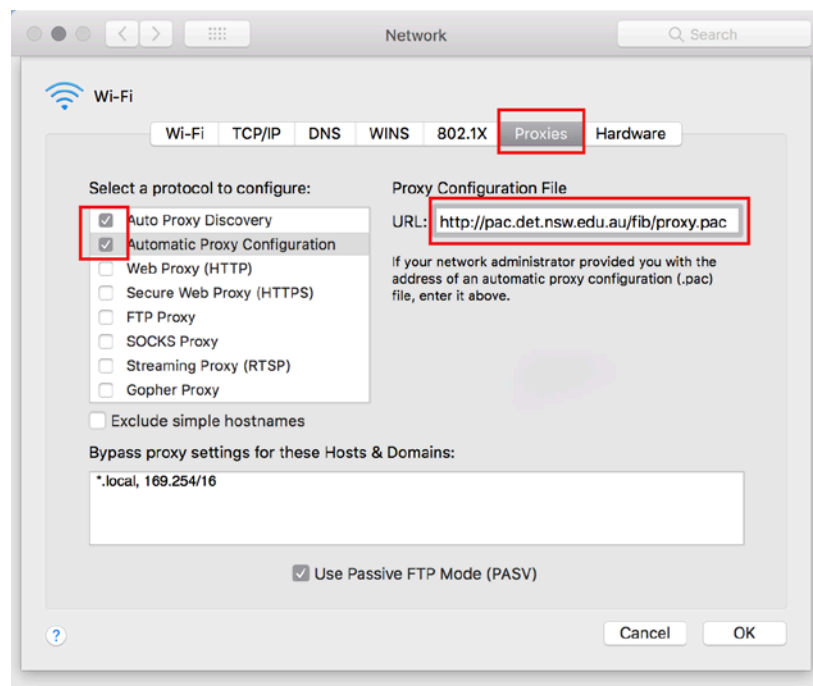
1. Click the Wi-Fi icon in the top right corner of the screen and Open Network Preferences.



2. Select the Advanced option.



3. In Network Preferences, select Proxies.



4. Tick the top two options and enter the DEC Proxy details as shown to ensure internet connectivity.